

“Celebrating Community and Cultivating Resilience”

Housekeeping Tips

- Please introduce yourself in the Chat box
- All attendees are participating in Listen Only mode during the beginning of the session. We will be using break out rooms for discussion later in this session.
- Post your questions in the Chat box
- Webinar is being recorded & will be made available
- Webinar is also being live-streamed on Facebook
- All resources will be shared in a follow-up email
- Follow the conversation on Twitter and LinkedIn, using #GLRWeek #BrightSpotsSilverLinings and tag us @readingby3rd
- Please take the brief evaluation survey posted at the end of the session
- We are offering live ASL interpretations services and you will see the interpreters on your screen for the duration of this session. Please remember to speak one at a time in group situations and speak slowly and clearly.

The Campaign for
**GRADE-LEVEL
READING**



GLR WEEK 2022 JULY 18-22

Bright Spots and Silver Linings

GLRWeek2022.gradelevelreading.net / #GLRWeek #BrightSpotsSilverLinings

CGLR appreciates the generous support of our Enterprise Investors from 2020–2022 (partial listing)

Anonymous



J. F MADDOX FOUNDATION

JOSEPH B. WHITEHEAD
FOUNDATION



THE HEINZ ENDOWMENTS
HOWARD HEINZ ENDOWMENT • VIRA I. HEINZ ENDOWMENT



Major family and individual donors, September 2020–August 2022

Carol Auerbach and Albert J. Berger; Michael and Molly Eskew; Steven and Catherine Fink; Jim and Jean Kelly; Carol Larson; Calvin and Tina Tyler; Larry and Harriet Weiss

Upcoming GLR Learning Tuesdays Webinars:

LEARNING LOSS RECOVERY CHALLENGE

Innovation in Out-of-School Digital STEM Initiatives

Co-sponsored by Overdeck Family Foundation

Tuesday, July 26, 3–4:30 p.m. ET/12–1:30 p.m. PT

LEARNING LOSS RECOVERY CHALLENGE

The Kindergarten Exodus: Why, Where and What We Can Do Now

Tuesday, August 2, 3–4:30 p.m. ET/12–1:30 p.m. PT

LEARNING LOSS RECOVERY CHALLENGE

A Peek Into Playful Learning Classrooms: What Success Looks Like

Tuesday, August 9, 3–4:30 p.m. ET/12–1:30 p.m. PT

LEARNING LOSS RECOVERY CHALLENGE

The Centrality of Relationships: Tutors, Mentors, Coaches and Parents

Tuesday, August 16, 3–4:30 p.m. ET/12–1:30 p.m. PT

Please stand by...We will begin momentarily!

gradelevelreading.net @readingby3rd #GLReading #LearningTuesdays #GLRKeepers



Plenary Sessions – In case you missed any, they can be accessed on CLIP.

A Virtual Gratitude Reception: CGLR Salutes Our Public Libraries
Monday, July 18, 3–4:30 p.m. ET

Building Blocks for the New Normal: Mining the Bright Spots and Silver Linings
Tuesday, July 19, 3–4:30 p.m. ET

\$45B to advance digital equity: Leverage challenges & opportunities for state & local funders
Wednesday, July 20, 3–4:30 p.m. ET

Community Coalition Leading Organizations: Celebrating Community and Cultivating Resilience
Thursday, July 21, 3–4:30 p.m. ET

Assume Collaboration: The Consultative Conversation on Aggregating for Impact Continues
Friday, July 22, 2–3:30 p.m. ET (invitation only)

Connect
and
Engage!



@readingby3rd



@CampaignforGLR



@CampaignforGLR

#GLRWeek

#BrightSpotsSilverLinings

GLRWeek2022.gradelevelreading.net



Community Coalition Leading Organizations: Celebrating Community and Cultivating Resilience

Thursday, July 21, 3-4:30 p.m. ET

Welcome!

Part 1: Celebration of Community

Recognizing our Pacesetter Community Finalists

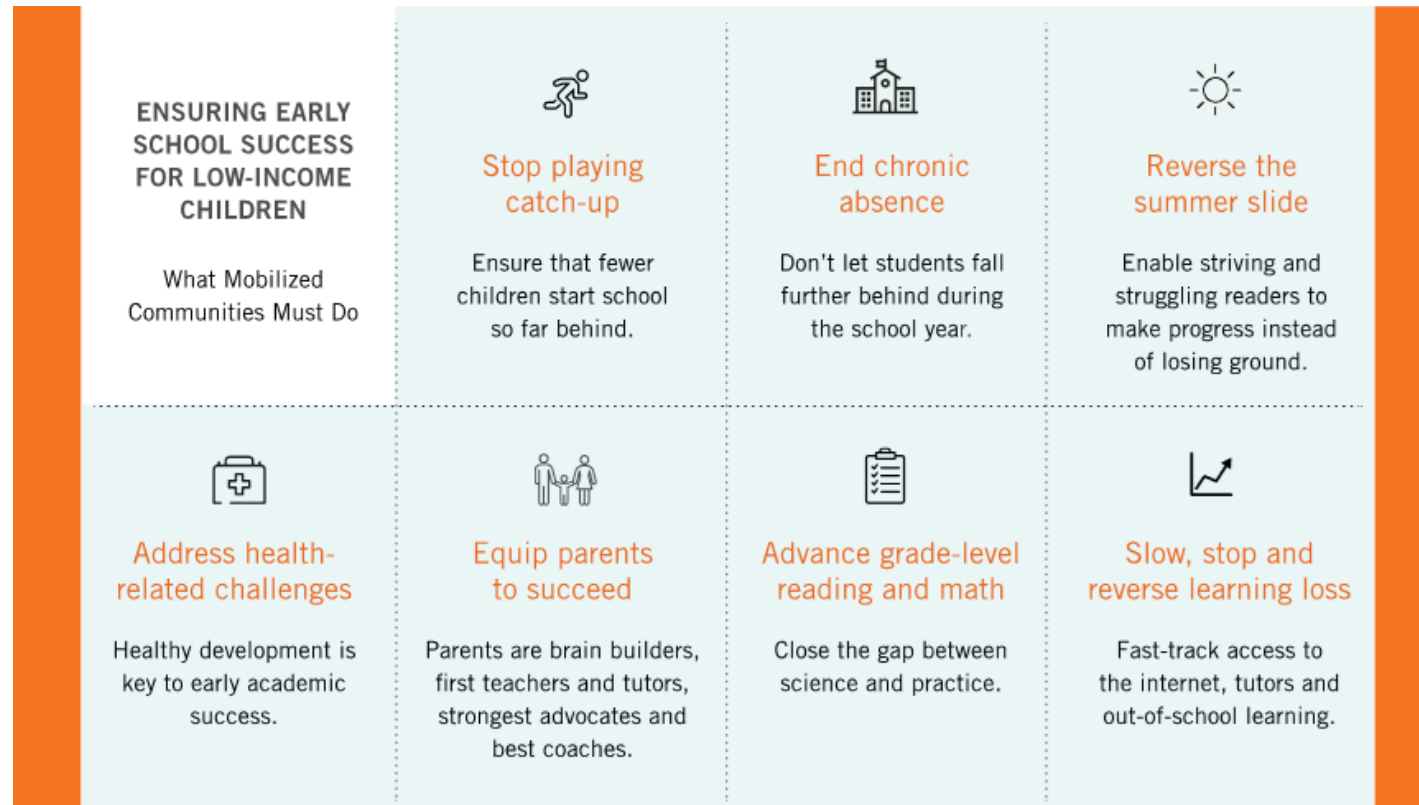
Part 2: Cultivating Resilience

- Introduction by Linda Liu and Cheryl Healy from McKinsey & Company
- Invitation to join break out room discussion from the perspective of your choice

Part 3: Reflections

Celebration of Community – 2021-22 Pacesetter Recognition Process

What is a Pacesetter Community? *A GLR community that is **exemplary** and **leading by example** in one or more areas which we recognize as critical to ensuring early school success for low-income children.*



Celebration of Community – 2021-22 Pacesetter Recognition Process



The 2021-22 Pacesetter recognition process was designed to generate stories from across the CGLR Communities Network that addressed five important questions:

1. What do you regard as the more significant of the COVID-19-responsive changes you have made in the past 18 months to your efforts around advancing the seven key “must do” priorities for early school success?
2. What adjustments have you made to update and refresh your Community Solutions Action Plan (CSAP)?
3. What do you observe regarding your community’s activities and progress around the “must have assurances” needed to slow learning loss and to accelerate equitable learning recovery?
4. What changes in practice, programs or policies would your community nominate as “post-pandemic keepers?”
5. How are you working to improve the prospects for early school success and equitable learning recovery for the hundreds of thousands of children whose families are served by the nation’s public housing agencies and affordable housing organizations?

Celebration of Community – 2021-22 Pacesetter Recognition Process



- ✓ 72 stories self-nominated from 35 communities in 12 states
- ✓ 132 peer reviewers completed 600+ reviews of the stories
- ✓ 46 of the most highly rated stories from 22 communities in 11 states named as finalists
- ✓ 2021-22 Pacesetter Communities to be announced at 5 PM ET on Thurs, Jul 21

Celebration of Community – 2021-22 Pacesetter Finalists



Avondale, Arizona

Broward County, Florida

Indian River County, Florida

Miami-Dade County, Florida

Suncoast, Florida

Cedar Rapids, Iowa

Des Moines, Iowa

Grinnell, Iowa

Marshalltown, Iowa

Story County, Iowa

Springfield, Massachusetts

St. Louis, Missouri

Southeast Mississippi, Mississippi

Tupelo/Lee County, Mississippi

Vicksburg-Warren County, Mississippi

New York City, New York

Philadelphia, Pennsylvania

Lehigh Valley, Pennsylvania

Wyoming Valley, Pennsylvania

Nashville, Tennessee

San Antonio, Texas

Roanoke, Virginia

Celebration of Community: Pacesetters Recognition



**Congratulations to all our
Pacesetter Finalists for their
amazing work!**

**Today we celebrate and honor
all that you do in your
communities!**

Cultivating Resilience



Introduction

Cheryl Healy
Senior Expert
McKinsey & Company



Introduction

Linda Liu
Partner
McKinsey & Company

The world has been growing more complex and global events such as COVID-19 exposed and accelerated the pace of change and uncertainty

Volatility

Need to change constantly, not just every 2-3 years

Uncertainty

Top-down plans and budgets increasingly fail in increasingly disruptive times

Complexity

External complexity mirrored by even more internal complexity

Ambiguity

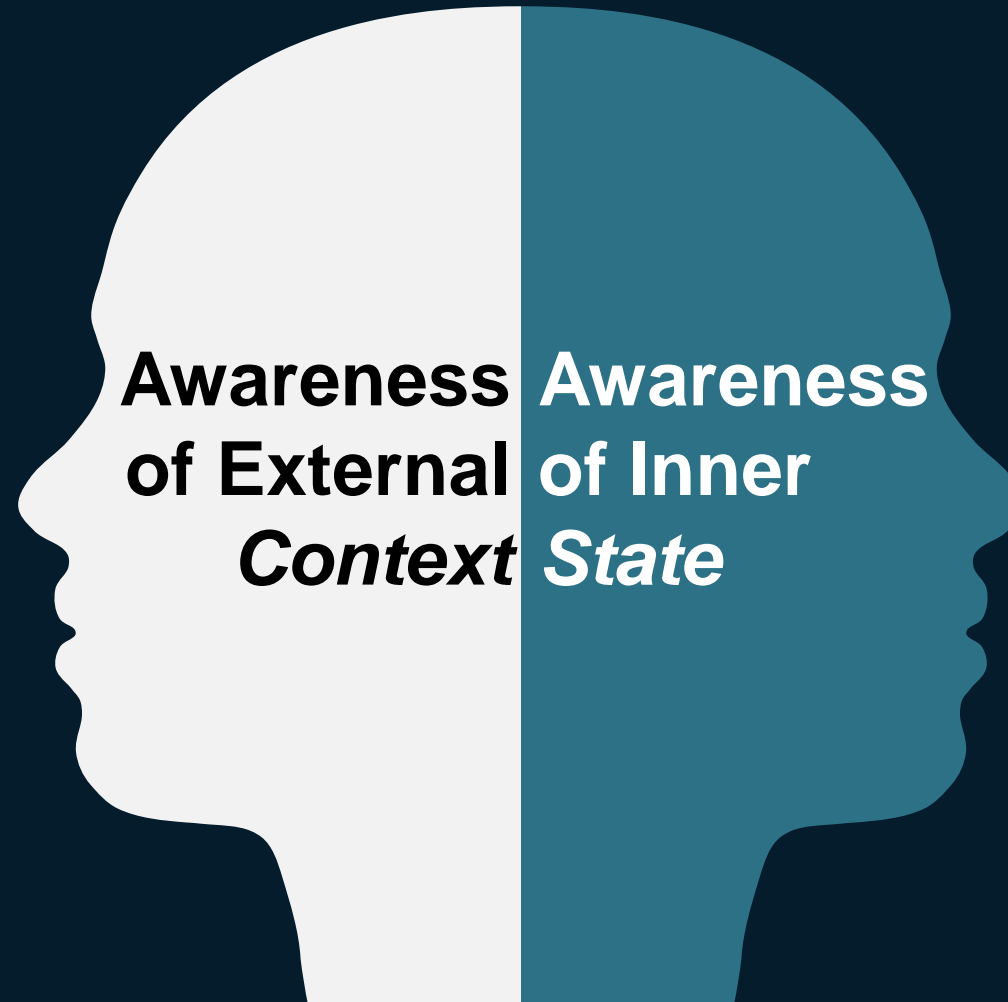
Meaningful insights come from unexpected places and defy predictable patterns

The Adaptability Paradox:

“When we most need to learn and change, we stick with what we know, often in a way that stifles learning and innovation”

The opportunity: developing *'Dual Awareness'*

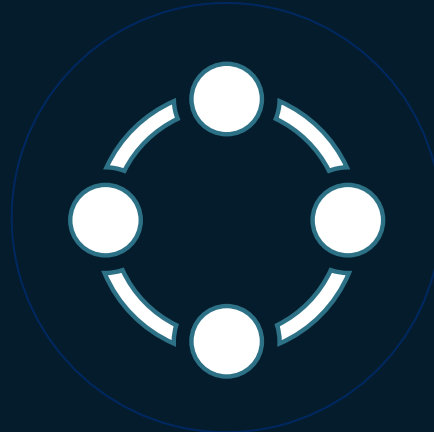
“What is at stake and is this a familiar situation, what does this situation call for?”



“What am I experiencing right now, how does this influence my response, what do I need to be effective?”



A few tools to get going...



1. Adapt your personal operating model



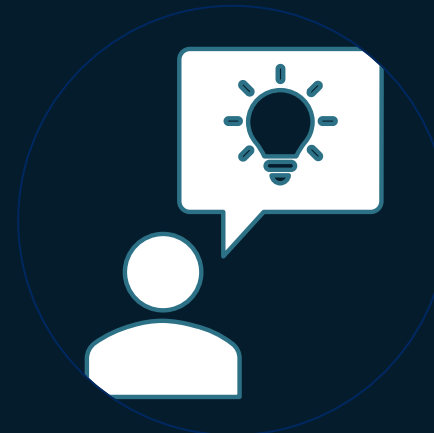
2. Set your intention



3. Regulate your reactions



4. Practice reflection



5. Reframe your perspective



6. Manage your Energy

Smaller Group Discussions: Going Deeper

Please select the discussion perspective of your choice.

Room 1: Collaboration and Funding for Resilience Perspective



Melissa Litwin, MBA
Early Childhood Program
Director
Henry and Marilyn Taub
Foundation



Mark Dinglasan, MBA
Executive Director
CUMAC

Smaller Group Discussions: Going Deeper

Please select the discussion perspective of your choice.

Room 2: Early Childhood Perspective



Kanoe Enos, MSW
A`ali`I Alliance



Kerrie Urosevich, MA, PhD
Network, Design, and
Innovation Lead
Early Childhood Action Strategy



Cherilyn Shiinoki, M.Ed.
Executive Director,
Family Hui Hawai'i



Erika Warner, LCSW
Makua Allies

Smaller Group Discussions: Going Deeper

Please select the discussion perspective of your choice.

Room 3: Family Engagement Perspective



Valerie Brown
Founder
The Skills Connexion LLC



Ken Livingston
Director
Get Delaware Reading
United Way of Delaware

Room 4: Out of School Learning Perspective



Elizabeth "Liz" Woody-Remington, M.Ed
Co-Founder and Director of
Professional Development
The Learning Alliance



Debbi Arseneux
Director
Moonshot Academy

Smaller Group Discussions: Going Deeper

Please select the discussion perspective of your choice.

Room 5: Greater Community & Collective Impact Perspective



Jill Pereira, MSW
Vice President Education & Impact
United Way of the Greater Lehigh Valley



Beth Thomlinson, MSS, MLSP
Senior Director of Education,
Co-Founder of Resilient Lehigh Valley
United Way of the Greater Lehigh Valley

Smaller Group Discussions: Going Deeper

45 Minutes in the smaller group discussions

- **Room 1: Collaboration & Funding for Resilience**
- **Room 2: Early Childhood**
- **Room 3: Family Engagement**
- **Room 4: Out of School Learning**
- **Room 5: Greater Community & Collective Impact**



Capturing the light and wisdom from each room

- In the Chat is a link to a Google form where you can record a few takeaways that stayed with you AND share how you would like to continue the conversation within the CGLR Network.
- Drop thoughts in the Chat
- CGLR Note taker will share 1 major takeaway from each room – will do more than 1 round if time allows.

Continuing the conversation in the GLR network...

1. Virtual Conference – 7/25 – 7/28



2022
READ TO SUCCEED'S
EARLY CHILDHOOD
VIDCON



**BUILDING STRENGTH
THROUGH
RESILIENCE**

Register today at
<https://thefamilycollective.thinkific.com/bundles/2022-rts-early-childhood-vidcon>



United Way
United Way
of Greater Nashville

JULY 25 - 28, 2022
Via Zoom
PRESENTED BY THE UNITED WAY OF GREATER NASHVILLE

2. Crucible of Practice – 9/13 @ 12:30 ET



Upcoming GLR Learning Tuesdays Webinars:

LEARNING LOSS RECOVERY CHALLENGE

Innovation in Out-of-School Digital STEM Initiatives

Co-sponsored by Overdeck Family Foundation

Tuesday, July 26, 3–4:30 p.m. ET/12–1:30 p.m. PT

LEARNING LOSS RECOVERY CHALLENGE

The Kindergarten Exodus: Why, Where and What We Can Do Now

Tuesday, August 2, 3–4:30 p.m. ET/12–1:30 p.m. PT

LEARNING LOSS RECOVERY CHALLENGE

A Peek Into Playful Learning Classrooms: What Success Looks Like

Tuesday, August 9, 3–4:30 p.m. ET/12–1:30 p.m. PT

LEARNING LOSS RECOVERY CHALLENGE

The Centrality of Relationships: Tutors, Mentors, Coaches and Parents

Tuesday, August 16, 3–4:30 p.m. ET/12–1:30 p.m. PT

Please stand by...We will begin momentarily!

gradelevelreading.net @readingby3rd #GLReading #LearningTuesdays #GLRKeepers

